



INPUT LIST AND STAGE PLOT

DRUMS - JIM GRILLO

KICK
SNARE
HH
TOM
FLOOR
OVERHEAD
SIDE SNARE
SPDSX PAD - DI PROVIDED
VOCAL

GUITAR AND KEYS

- JON SHEFFER
GUITAR AMP - MIC PROVIDED
NORD/ORGAN - DI PROVIDED
KEYBOARD - DI PROVIDED
VOCAL MIC - MIC PROVIDED

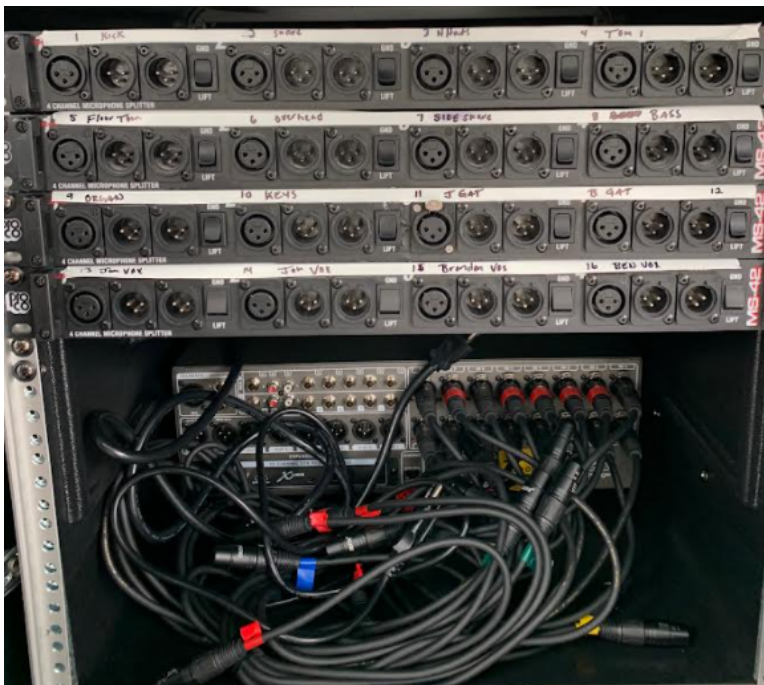
LEAD VOCAL AND GUITAR

- BRANDON SHEFFER
GUITAR AMP - MIC PROVIDED
VOCAL MIC - MIC PROVIDED

BASS - BEN OVERMYER

DIRECT OUT ON AMP
VOCAL MIC - MIC PROVIDED

- Mochester will provide an X32 Rack to run their own in-ear system for monitors
- A 16 Channel Split is provided by Mochester for FOH run.
- Split is Transformer isolated
- Mochester will notify venue if additional cabling is needed



CH. 1 - KICK
CH. 2 - SNARE
CH. 3 - HH
CH. 4 - TOM 1
CH. 5 - FLOOR TOM
CH. 6 - OVERHEAD
CH. 7 - SIDE SNARE
CH. 8 - BASS GUITAR
CH. 9 - ORGAN / NORD
CH. 10 - KEYBOARD
CH. 11 - JON GUITAR
CH. 12 - BRANDON GUITAR
CH. 13 - VOX - JIMMY (DRUMS)
CH. 14 - VOX - JON (KEYS/GUITAR)
CH. 15 - VOX - BRANDON (LEAD)
CH. 16 - VOX - BEN (BASS)

AUX 1 - SPDSX SAMPLE PAD - TO EARS
(FOH TAKES L(MONO) OR L/R(STEREO) FROM SPDSX
AND HOME RUNS IT TO FOH)